



INDO CONSTRUCTION FASTENING SYSTEMS

A brand of Indo Spark Group Since 1978



CM350P

Chemical Mortar

Indo Construction Fastening Systems

Indo Construction Fastening Systems (ICFS) is a 45+ years company, having expertise and operations in the following three verticals:

- ICFS Anchor Fastening Systems
- Construction Services
- ICFS Anchor Designer

We have chemical and mechanical anchors usable for installing furniture, fixtures & structures at site. Based on the design load parameters, we even suggest correct type of chemical, diameter of anchor bolts, embedment depth and chemical consumption per hole.

ICFS - Leading manufacturer and anchor solutions provider in India offers a complete range of high-quality anchors, including:

- Chemical anchor studs (Anchor Stud diameter 8 mm and length up to one meter (1000mm) can be manufactured on specific request
- Nylon anchors
- Mechanical anchors like through bolt anchors We can help you find the right anchor for your specific needs and ensure a secure and reliable fastening.

Our story

«From an automotive workshop employing just 2 in 1978 to what we are today-a well-known, successful, respectable, leading business house in India.

It was indeed a long journey. A journey full of challenges, hardships, bottlenecks. But we came out intact and grew many folds - vertical and horizontal.

The best assets of ours, I think are our reputation for honesty, fair dealing, timely delivery and quality.

As I look back there are two main factors which made Indo Spark blossom. First is the wisdom and honesty of our chairperson Mr. Tilakchand Ingale along with his trust in the employees and second is the wholehearted, sincere, hard work put up by our employees – young and old including technicians and workmen.

One thing is certain

We have never stopped growing.

Sandeep Ingale, CEO Indo Spark Group

Chemical Mortar CM350P



Description

The CM350P is a high performance rapid curing two-component. Chemical injection anchoring system based on high reactivity unsaturated Polyester resin. The side by side cartridge format comprises of a resin and hardening agent in separated internal compartments that are mixed to the correct triggered using the required manual dispenser.

The resin is available in grey colour. All features combined make Polyester anchoring resin a versatile and cost effective anchoring system. Polyester CM350P is available in CiC (foil pack), C-CN (co-axial) and S-SN (side-by-side) cartridges

Variant 350ml side by side cartridge


Material Polyester

Features

- Suitable for medium loads for non-critical applications.
- Fast working times for early loading in time sensitive applications.
- Use in outdoor environments and fixing holes.
- Extremely versatile in masonry, hollow, aerated concrete.
- Crack and gap filling repairs in concrete vertical or horizontal.
- 10:1 resin available in a variety of cartridge types
- Available in co-axial cartridges (420ml), side by side cartridges (350ml), and single piston foil pack cartridges (300ml)
- Available in grey resulting colours

Application

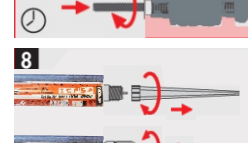
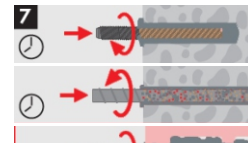
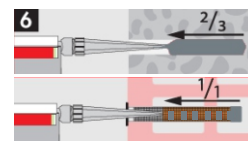
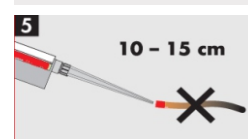
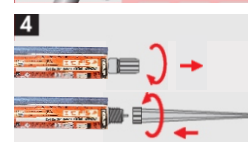
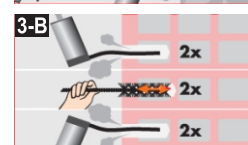
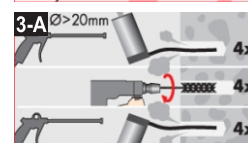
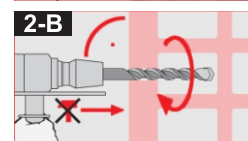
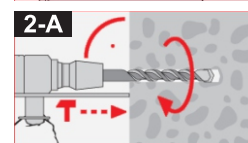
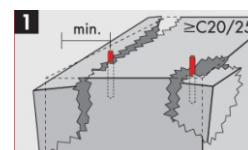
- Masonry Supports
- Boilers
- Machinery
- Canopies
- Handrails
- Ventilated Fascades
- Bicycle Racks

 °C	Typical Gel Time
≥ 0 °C	45 min
≥ +5 °C	25 min
≥ +10 °C	15 min
≥ +20 °C	6 min
≥ +30 °C	4 min
≥ +35 °C	2 min
≥ +40 °C	1,5 min

Product Code	Content (ml)	Colour when mixed	Package content
CM350 P	350	Grey	12



ICFS Chemical Production Unit



Anchorage in concrete with Rebar CM350 P

High bond Reinforcing Bars FYK = 500N/mm²

Rebar Diameter (mm)	Drill Hole Diameter (mm)	Design Resistance (N _{rd})														Steel failure load (kN)
		(kN)														
8	8-12	4.3	5.6	6.1	7.1	8.1	9.2	10.5	12.1	13.9	15.8					21.9
10	12-14	5.1	6.9	7.1	8.2	9.3	10.7	12.4	14.2	16.4	18.8	20.2	22.8			34.1
12	14-16	6.3	7.2	9.6	10.1	11.1	12.2	13.3	14.8	17.2	19.7	21.5	24.7	27.2	29.8	49.2
Depth (mm)		70	80	90	100	110	120	130	140	150	160	200	240	280	320	
16	18-20	10.6	12.9	14.2	17.4	20.1	24.5	26.9	29.6	32.6	35.9					87.4
20	25	11.4	13.5	15.9	18.7	22.1	26.5	29.1	31.9	35.2	38.8	42.7				136.6
				17.5	20.5	24.2	28.5	33.6	40.3	48.3	58.1	69.6	83.6			196.5
Depth (mm)		80	100	120	140	160	200	240	280	300	320	400	480	540		

High bond Reinforcing Bars FYK = 500N/mm²

Rebar Diameter (mm)	Drill Hole Diameter (mm)	Recommended Resistance (N _{rd})													
		(kN)													
8	8-12	1.1	3.2												
10	12-14	2.7	3.8	4.8	5.7	6.8	7.7	8.9							
12	14-16	3.1	4.1	5.1	5.9	7.1	8.2	9.1							
Depth (mm)		70	80	90	100	110	120	130	140	150	160	200	240	280	
16	18-20	5.8	7.2	9.1	10.9	13.1	15.7	18.8	20.9	22.8	27.3				
20	25	6.5	8.2	10.3	11.5	14.4	16.2	19.4	21.7	23.5	28.4	32.8			
25	30			11.1	12.2	15.3	17.1	20.6	22.8	25.1	30.2	34.4	41.2		
Depth (mm)		80	100	120	140	160	200	240	280	300	320	400	480	540	

Anchorage in concrete with Threaded rod 5.8 grade CM350 P

5.8 Grade Studing

Rebar Diameter (mm)	Drill Hole Diameter (mm)	Design Resistance (N _{rd})														Steel failure load (kN)
		(kN)														
8	10	5.3	6.1	7.3	8.7											
10	12		6.9	9.1	11.5										20.1	
12	14		7.2	9.6	12.1	15.6	19.5								29.2	
Depth (mm)		70	80	90	100	110	120	130	140	150	160	200	240	280		
16	18	9.6	12.9	17.2	21.5	26.8	29.8								54.4	
20	24		16.7	20.9	24.1	27.1	31.1	35.7	41.3						84.9	
24	28		19.8	23.7	28.8	30.9	34.5	39.5	45.4	51.1	56.8	62.5			122.4	
Depth (mm)		80	100	120	140	160	200	240	280	300	320	400	480	540		

5.8 Grade steel Studying

Rebar Diameter (mm)	Drill Hole Diameter (mm)	Recommended Resistance (N _{rd})													
		(kN)													
8	10	3.5	4.4												
10	12	4.1	5.8	6.6	7.3										
12	14	4.8	6.4	7.28	8.01	8.9									
Depth (mm)		70	80	90	100	110	120	130	140	150	160	200	240	280	
16	18	6.9	9.2	12.3											
20	24	7.8	10.1	13.1	15.3	18.1	21.7	26.4							
24	28		11.3	14.2	16.6	19.6	23.1	27.7	33.2	39.9	47.8	57.4			
Depth (mm)		80	100	120	140	160	200	240	280	300	320	400	480	540	



A brand of Indo Spark Group Since 1978

CHANNEL PARTNER



INDO SPARK CONSTRUCTION SERVICES

CORPORATE OFFICE

198, E Ward, Tararani Chowk,
Near Geeta Mandir,
Kolhapur - 416 003 (Mah.India)
Toll Free : 1800 123 500 023
E-mail : mail@indospark.com

BRANCHES

Pune | Mumbai



FOLLOW US



www.indospark.com