

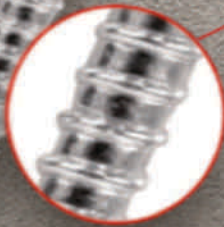


**NEW!**

100% nylon

100% secure fixing

**REDUCED THREAD**  
- precise installation of the screw  
- increased expansion force in the second expansion zone



# Universal Frame Anchor



# Hex Head Screw

[www.indospark.com](http://www.indospark.com)

# Hex Head Screw

## Universal Frame Anchor

### Description

The ICFS Universal Frame Anchor is a light duty, rotation setting, interference fit anchor, designed for use in a variety of substrates such as concrete, stone, solid brick, hollow brick, solid block, hollow block, hollow slab block and lightweight concrete (AAC) block. Available in various sizes with countersunk or hex head screw.

### Specification

Material - Sleeve	Nylon
Material - Screw (Ultra Long only)	Carbon Steel
Corrosion Protection (Ultra Long only)	Zinc Plating
Head Styles (Ultra Long only)	Countersunk, Hex
Fixing Method	Through Fixture (Long, Ultra Long) Fixture Aligned (Standard)
Setting Method	Rotation
Anchoring Method	Interference Fit
Screw Gauge	5 - 24
Drilled Hole Diameters	5mm, 6mm, 7mm, 8mm, 10mm, 12mm
Anchor Lengths	25mm, 30mm, 40mm, 50mm, 60mm, 80mm, 100mm, 135mm, 160mm
Maximum Fixture Thickness' (Ultra Long and Long only)	10mm, 45mm, 70mm

### Base Material



Concrete



Hollow Core Concrete



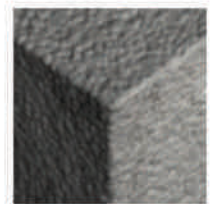
Perforated Brick Masonry



Solid Masonry



Hollow Masonry



Aerated Concrete

### Features & Benefits

- Anti-rotation barbs prevent the anchor from rotating in the hole.
- Countersunk sleeve allows for flush finishing.
- Nylon sleeve reduces the effects of cold bridging. e.g. mold growth, when compared to all-metal anchors.

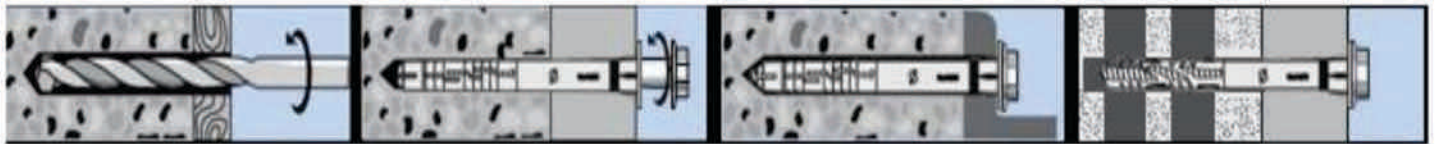
### Trades & Applications

	Carpenter	Flooring Contractor	Garage Door Installer	Window/Door Installer
Anchoring wall/base plates & battens	✓	✓		
Fitting door & window frames	✓			✓
Fitting garage doors			✓	



### Installation Guide

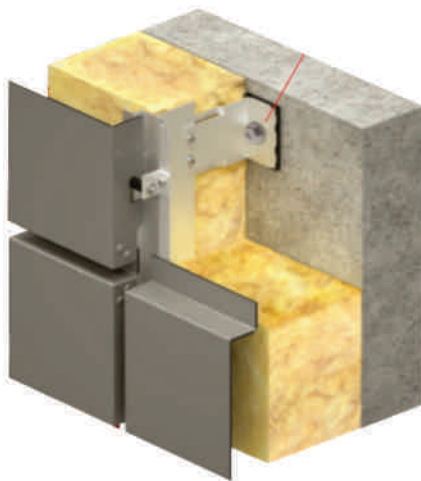
- Drill a hole to the recommended diameter and depth using the fixture as a template. If the fixture thickness is less than the maximum, increase the hole depth accordingly. Clean the hole thoroughly with a hole cleaning brush. Remove the debris with a hand pump, compressed air, or vacuum.
- Insert the anchor through the fixture and tap with a hammer until the collar of the anchor contacts the fixture.
- Tighten screw until the head of the screw is flush with the collar of the anchor.



### Available Sizes

Diameter in mm		Length in mm		Drill Hole in mm	Min. drill depth in mm	Min. ins. Depth in mm	Max. Pract. Applic in mm
Plug	Screw	Plug	Screw				
10	7	80	90	10	70	60	20
10	7	100	110	10	70	60	20
10	7	120	130	10	70	60	20
10	7	140	150	10	70	60	20
10	7	160	170	10	70	60	20
10	7	180	190	10	70	60	20

### Installation Example





India's Leading  
**CONSTRUCTION**  
Fastening System

Limited  
**L1MCA**  
**BOOK of**  
**RECORDS**

*Awards Winner 2015*

We are proud to announce ourselves as all India distributors for  
**Construction Fastening Systems (UK)**



## \* Anchor Fasteners \* PU Foam

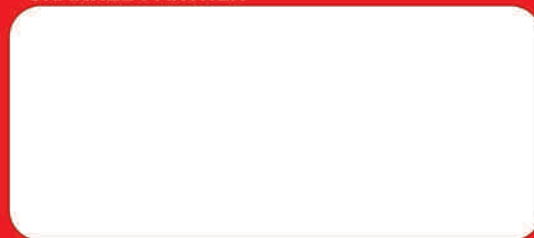


 **INDOSPARK**  
CONSTRUCTION SERVICES

### CORPORATE OFFICE

198, E ward, Tararani Chowk,  
Near Geeta Mandir,  
Kolhapur - 416 003 (Mah.India)  
Toll Free : 1800 123 500 023  
E-mail : mail@indospark.com

### CHANNEL PARTNER



### BRANCH

Islampur | Pune | Mumbai



FOLLOW US



www.shop.indospark.com

HHS/10/020/R0

