

# INNOVATIVE FIXING FOR SAFE ELEVATOR INSTALLATIONS

Elevator Anchoring System

# Chemical Anchors For Elevator



## CM585PE - PRO

### FEATURES

- High Bond Strength
- Corrosion & Moisture Resistant
- Suitable for Heavy Anchor Sizes
- Works in Cracked & Non-Cracked Concrete

### ADVANTAGES

- Long Service Life - 100 years
- Faster Installation
- Cost Effective
- Works in Tough Conditions

### APPLICATIONS

- Elevator Shaft Installations
- Machine Room
- Pit Area
- Structural Fixing



**CM585PE-PRO**  
(585 ml) | 3:1 Ratio



**Range:** M08 X 110mm to M30 x 500mm

**Grade:** 5.8, 8.8, SS304(A2), SS136(A4)

# Chemical Anchors For Elevator

## CM350VESF



### FEATURES

- Fast Curing & Setting
- Works in Non-Cracked Concrete
- Moisture & Chemical Resistant
- Supports Heavy Duty Anchors

### ADVANTAGES

- Speedy Installation
- Lower Long-Term Cost
- Stable Under Load & Vibration
- Versatile for Many Fixings

### APPLICATIONS

- Elevator Guide Rail Fixing
- Pit & Buffer Support Anchoring
- Structural Steel & Heavy Components
- Machine Room & Base Anchoring



CM350VESF

350 ml | 10:1 Ratio



# Mechanical Anchors For Elevator

## Indo Wedge Anchor IWA

### FEATURES

- Easy installation
- Use in non-cracked concrete
- Previous installation, or through the fixture
- Use for static or quasi-static loads

### ADVANTAGES

- High Load Capacity
- Fast, Easy Installation
- Immediate Load-Bearing
- Low Maintenance

### APPLICATIONS

- Machine Room Fixtures
- Structural Steel Fixing
- Pit & Buffer Supports



**IWA**

**Range:** M08 X 115mm to M20 x 220mm

**Grade:** 5.8, SS304(A2), SS136(A4)



# Mechanical Anchors For Elevator

## Indo Prime Bolt Zone IPBZ DP

### FEATURES

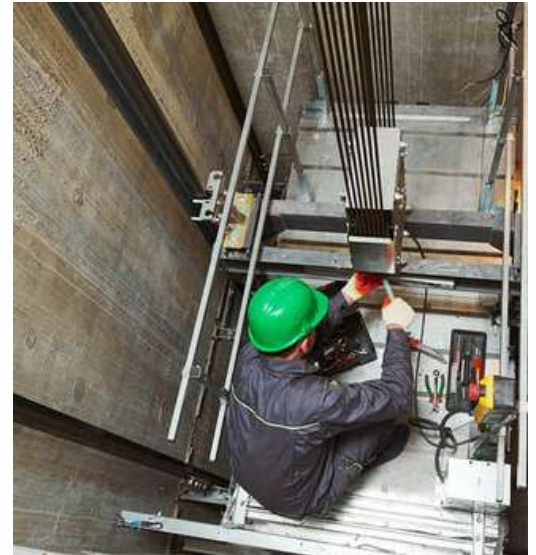
- Corrosion-Resistant Coating
- Instant Load-Bearing Fixing
- Strong Wedge Expansion Mechanism
- Precision Engineered Design

### ADVANTAGES

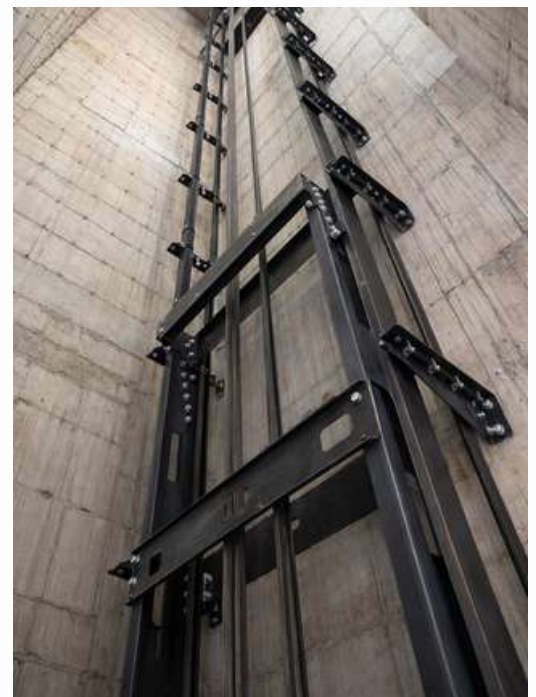
- Fast & Easy Installation
- Immediate Load Capacity
- High Safety and Reliability
- Cost-Effective Solution

### APPLICATIONS

- Elevator Guide Rail Bracket Anchoring
- Machine Room & Motor Base Fixing
- Structural Steel & Support Frames
- Architectural & Finishing Fixings



Zinc Flake Coating



Range: M08 x 80 to M20 x 220

# Nylon Anchors For Elevator

## Hex Head Screw HHS



### FEATURES

- Hexagonal Head
- Machine-Threaded Shaft
- Multiple Sizes & Grades
- Material Options

### ADVANTAGES

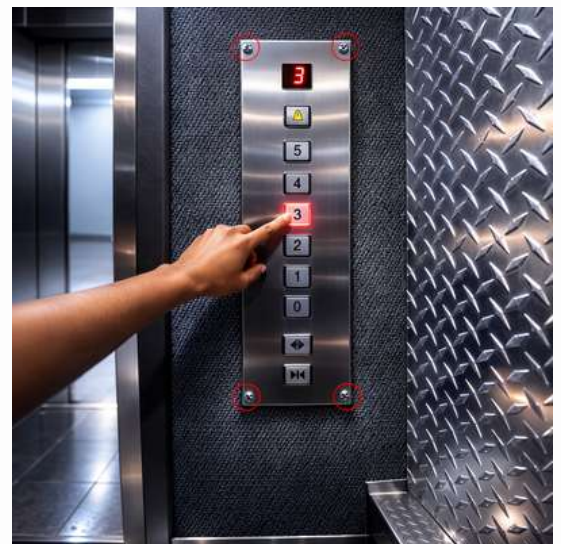
- High Load-Bearing Strength
- Easy Installation & Maintenance
- Reusable & Adjustable
- Strong Mechanical Fix

### APPLICATIONS

- Elevator Guide Rail Installations
- Machine Room Equipment Mounting
- Structural Fixings



Hex Head  
Screw



**Range:** M10 x 80 to M10 x 100

---

# Our Clientele



CHANNEL PARTNER



## **INDO SPARK CONSTRUCTION SERVICES**

### **CORPORATE OFFICE**

**R.S.NO.12-A, Plot No.8/9, Godown 2,  
Near KMT Petrol Pump, Shirolit-  
TAL - Hatkanangale,  
Kolhapur - 416 122 (Mah.India)  
Toll Free : 1800 123 500 023  
E-mail : mail@indospark.com**

### **BRANCHES**

**Pune | Mumbai | Bangalore | Chiplun**

[www.indospark.com](http://www.indospark.com)  
[www.chemicalanchors.in](http://www.chemicalanchors.in)